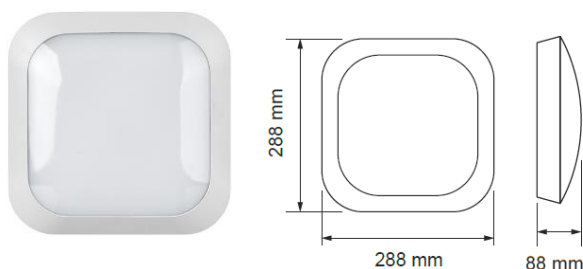


LED Waterproof ceiling lamp, 14 W, 4500 K, IP66

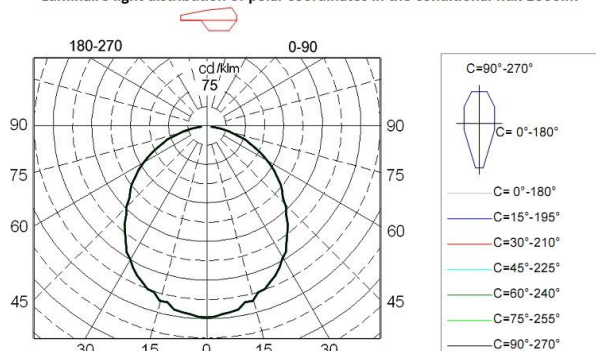
art. № LWP2201445

Description

LED Waterproof ceiling lamp LWP2201445 delivers the advantages of LED technology in surface mount ceiling luminaires. These are an ideal replacement for older incandescent, ecohalogen or fluorescent based ceiling lamp. The LED light sources used are up to 75% more energy efficient versus traditional light sources. Using LED allows a stylish slim line design only 88 mm thick for a clean, easy installation.



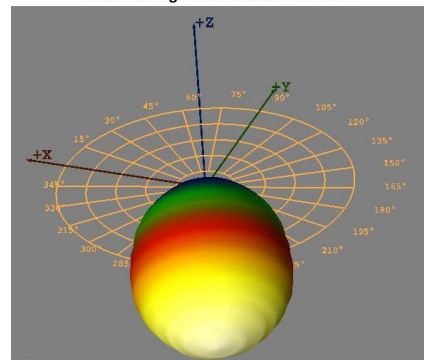
Luminaire light distribution of polar coordinates in the conditional flux 1000lm



Light-technical information

- Efficiency: 94 lm/W
- Max. Intensity: 373.99 cd/klm
- Rated luminous flux: 1500 lm
- Correlated Color Temperature: 4500 K
- Color Rendering Index: Ra≥80
- Rotosymmetrical luminous distribution 120°.
- LED Type: SMD
- Idt. files are available.
- No flickering light.

Luminaire light distribution of the 3D



Electrotechnical Information

- Supply voltage: 220-240 V/ 50-60 Hz
- Power: 14 W
- Built-in driver KEGU.

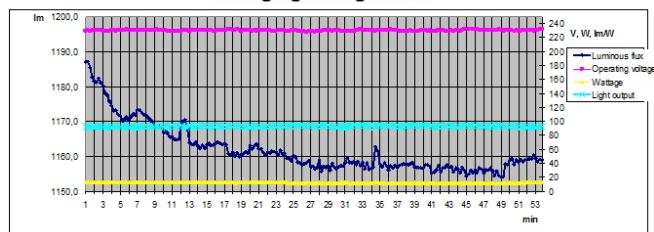
Basic information

- IP rate: IP66
- Working temperature: -20 °C ÷ +45 °C
- Dimensions: length 288 mm, height 88 mm, width 288 mm
- Warranty period: 3 years
- Average Life Time: 50 000 hours
- On/Off Cycles: 30 000
- Impact protection rate: IK10
- Glow wire test: 850° C

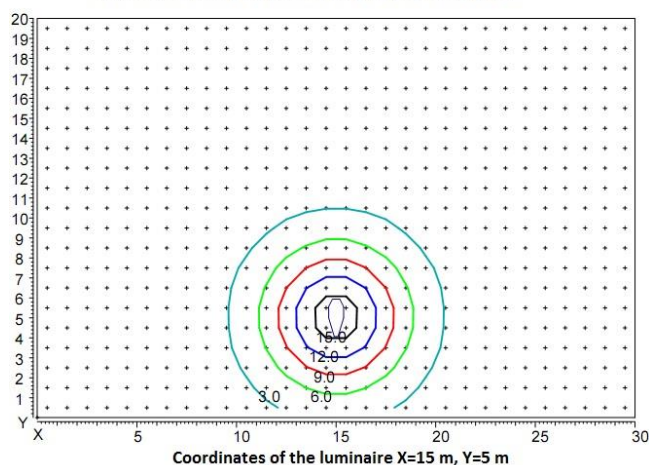
Construction

- Housing: Polycarbonate material, high impact resistant IK10.
- Diffuser: Polycarbonate material, high impact resistant IK10, UV protection.
- PCB: High temperature resistant aluminium.
- Waterproof and dustproof: IP66
- Waterproof cable gland.

Changing the light flux



Distribution of illumination in height hanging lamp 5 m



Certificates:

